

Service manual Minimat 43 S

Version: 2.00

Ident:

Series:

Part-Number: X1000

This part can be ordered.

Chapter

baking chamber, Minimat 43 S 230V 50Hz - V:
control unit, Minimat 43 S 230V 50Hz - V:
door, Minimat 43 S 230V 50Hz - V:
frame, Minimat 43 S 230V 50Hz - V:
installation room, Minimat 43 S 230V 50Hz - V:

Service manual **baking chamber, Minimat 43 S 230V 50Hz**

Version:

Ident:

Series:

Part-Number:

Chapter

X1100-011-000 - baking pipe assembled, Minimat 43 S 230V 50Hz - V:

Servicemanual

baking pipe assembled, Minimat 43 S 230V 50Hz

Version:

Ident:

Series:

Part-Number: X1100-011-000

Chapter

06035 - tray runners Minimat
08628 - thermostat tube
107923 - thermocouple plug
107924 - thermocouple tube
37981 - capillary tube regulator
38337 - door seal MINIMAT
9030-140-005 - thermocouple

Part: tray runners Minimat

Part-Number: 06035



Part: thermostat tube

Part-Number: 08628



Part: thermocouple plug

Part-Number: 107923



Part: thermocouple tube

Part-Number: 107924



Part: capillary tube regulator

Part-Number: 37981

The thermostat measures the oven temperature. The fluid in the capillary tube measures the temperature. Be sure not to kink the capillary tube when placing it the result will be a false reading or interruption. Insulate the capillary tube on critical spots (e.g. circuit board) with silicone hose article number 40074.



Part: door seal MINIMAT

Part-Number: 38337

The door seal is glued with transparent heat resistant silicone on the radii, on the edges and on the long stretches. Should this be exchanged the old seal must be removed with the help of a knife. Clean the tracks and remove all silicone remains. Ensure when installing that the seal is completely in the frame. Order the door seal as cut ware. Instructions for installation and length of door seal can be found in the assembly instructions.



Part: thermocouple

Part-Number: 9030-140-005



Servicemanual control unit, Minimat 43 S 230V 50Hz

Version:

Ident:

Series:

Part-Number:

Chapter

X1000-301-010 - control panel classic assembled, Minimat 43 S 230V 50Hz - V;
X1000-355-000 - control panel comfort assembled, Minimat 43 S 230V 50Hz - V;
X1200-355-026 - slider classic assembled, Minimat 43 S 230V 50Hz - V;
X1200-355-027 - slider comfort assembled, Minimat 43 S 230V 50Hz - V;

Service manual

control panel classic assembled, Minimat 43 S 230V 50Hz

Version:

Ident:

Series:

Part-Number: X1000-301-010

Chapter

110239 - carrier thermostat
110855 - silicone hose
33004 - control lamp yellow
34862 - knob thermostat
35148 - signal lamp with clip
35149 - signal lamp lux, yellow
36691 - knob timer
400342 - safety limit switch
400771 - illuminated key attachment adapter
400772 - illuminated key LED 230 V
400773 - illuminated key closing contact
401082 - illuminated key
401083 - illuminated notch (ON / OFF)
40316 - lens flange head screw
421017 - clock timer 60 minutes
70355 - safety limit switch
9030-325-001 - illuminated push-button black
X1000-355-017 - cover classic tank
X1000-355-018 - cover classic
X1200-355-040 - button lense flat, "ON" "OFF"
X1200-355-041 - button lense flat, steaming
X1200-355-042 - button lense flat, fan speed

Part: carrier thermostat

Part-Number: 110239

Part: silicone hose

Part-Number: 110855



Part: control lamp yellow

Part-Number: 33004

The control lamp illuminates for as long as the heater heats. When the set temperature is reached the control lamp shuts off.



Part: knob thermostat

Part-Number: 34862

Please note when ordering: Thermostat dial and timer dial have different connectors and are not compatible



Part: signal lamp with clip

Part-Number: 35148



Part: signal lamp lux, yellow

Part-Number: 35149



Part: knob timer

Part-Number: 36691

Please note when ordering: Thermostat dial and timer dial have different connectors and are not compatible



Part: safety limit switch

Part-Number: 400342

The thermostat knob regulates the post running of the fan to prevent the electrical components from overheating.



Part: illuminated key attachment adapter

Part-Number: 400771



Part: illuminated key LED 230 V

Part-Number: 400772

LED only with manual version as well as IS400 version with water tank.



Part: illuminated key closing contact

Part-Number: 400773

By locking the switch, the contactor tightens and the normally open contact closes the inductor circuit as long as the power is supplied.



Part: illuminated key

Part-Number: 401082

The illuminated key does not click in. It only functions as long as it is pressed e.g. steaming.



Part: illuminated notch (ON / OFF)

Part-Number: 401083

The illuminated key clicks in when in use. To deactivate the key it must be pressed. For example on/off



Part: lens flange head screw

Part-Number: 40316



Part: clock timer 60 minutes

Part-Number: 421017

Part: safety limit switch

Part-Number: 70355

The temperature safety limit switch (STB) is the overheating protection for the baking chamber. It is activated at a temperature of 360°C. The heater connector switches off and the appliance quits working. Once the oven cools down the STB can be manually reset. The measurement occurs from the fluid in the capillary tube. Ensure when placing the capillary tube that it does not kink. The result is false readings or interruption. Insulate the capillary tube on the critical spots (e.g. circuit board) with silicone hose article number 40074.



Part: illuminated push-button black

Part-Number: 9030-325-001

Part: cover classic tank

Part-Number: X1000-355-017



Part: cover classic

Part-Number: X1000-355-018



Part: button lense flat, "ON" "OFF"

Part-Number: X1200-355-040



Part: button lense flat, steaming

Part-Number: X1200-355-041



Part: button lense flat, fan speed

Part-Number: X1200-355-042



Servicemanual

control panel comfort assembled, Minimat 43 S 230V 50Hz

Version:

Ident:

Series:

Part-Number: X1000-355-000

Chapter

107695 - blade terminal, double 6.3

110239 - carrier thermostat

110855 - silicone hose

70355 - safety limit switch

9030-320-007 - Comfort Minimat

X1000-355-065 - cover comfort-tank, glued

X1000-355-066 - cover comfort, glued

X1200-355-029 - seal

X1200-355-116 - cover control

X1200-355-117 - fastener USB

Part: blade terminal, double 6,3

Part-Number: 107695



Part: carrier thermostat

Part-Number: 110239

Part: silicone hose

Part-Number: 110855



Part: safety limit switch

Part-Number: 70355

The temperature safety limit switch (STB) is the overheating protection for the baking chamber. It is activated at a temperature of 360°C. The heater connector switches off and the appliance quits working. Once the oven cools down the STB can be manually reset. The measurement occurs from the fluid in the capillary tube. Ensure when placing the capillary tube that it does not kink. The result is false readings or interruption. Insulate the capillary tube on the critical spots (e.g. circuit board) with silicone hose article number 40074.



Part: Comfort Minimat

Part-Number: 9030-320-007



Part: cover comfort-tank, glued

Part-Number: X1000-355-065

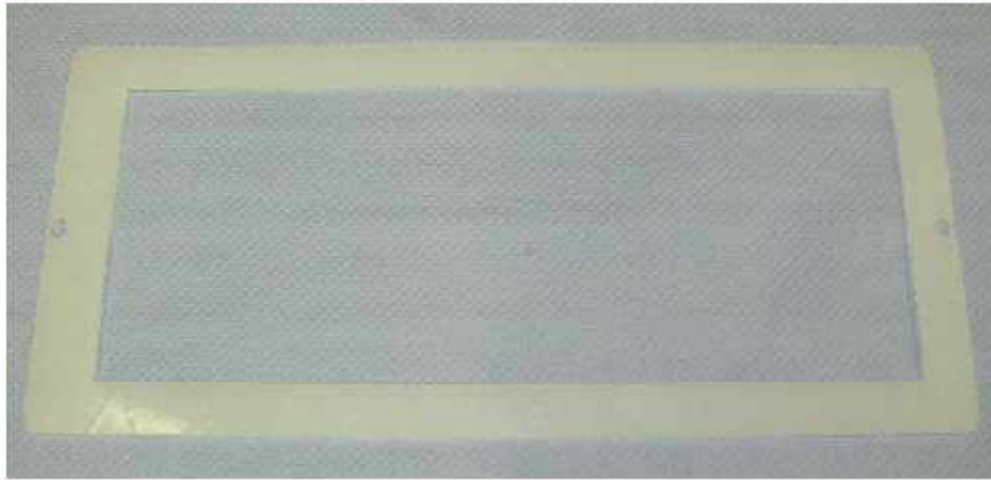


Part: cover comfort, glued

Part-Number: X1000-355-066

Part: seal

Part-Number: X1200-355-029



Part: cover control

Part-Number: X1200-355-116

Part: fastener USB

Part-Number: X1200-355-117

Service manual slider classic assembled, Minimat 43 S 230V 50Hz

Version:

Ident:

Series:

Part-Number: X1200-355-026



Chapter

- 107082 - fastening element for cable clip 6mm
- 109042 - bearing rail l=225
- 109905 - through terminal, blue 2,5m
- 109906 - PE- terminal
- 111338 - holder for wire harness
- 111343 - cross bridge iso. red 24 A 4/0
- 111344 -
- 111345 - cable with plug for axial fan
- 33884 - relay main switch
- 34100 - transformer
- 36058 - buzzer
- 36304 - cam switch
- 404810 - end clamp grey
- 404814 - intermediate plate clamp
- 9030-430-040 - cable set Minimat classic
- X1200-355-028 - slide Minimat

Part: fastening element for cable clip 6mm

Part-Number: 107082



Part: bearing rail I=225

Part-Number: 109042



Part: through terminal, blue 2,5m

Part-Number: 109905



Part: PE- terminal

Part-Number: 109906



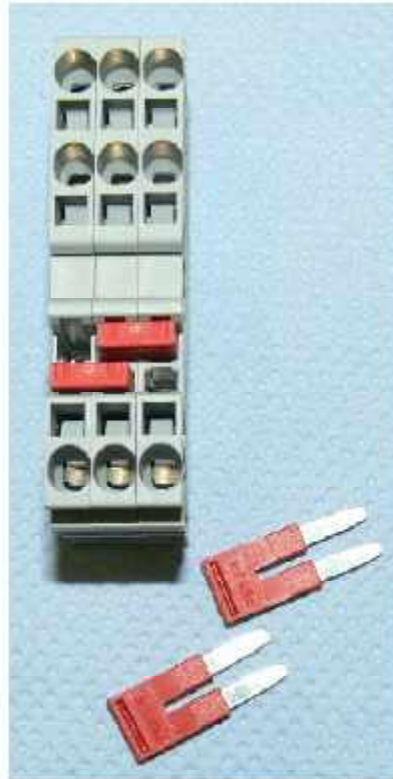
Part: holder for wire harness

Part-Number: 111338



Part: cross bridge iso. red 24 A 4/0

Part-Number: 111343



Part:

Part-Number: 111344



Part: cable with plug for axial fan

Part-Number: 111345



Part: relay main switch

Part-Number: 33884

The contactor switches the heater on/off.



Part: transformer

Part-Number: 34100



Part: buzzer

Part-Number: 36058

An acoustic signal is given at the end of the timer. (Buzzer 230 V)



Part: cam switch

Part-Number: 36304

The cam switch is a timed controlled direction changer of the fanwheel and controls the turning contactor.



Part: end clamp grey

Part-Number: 404810



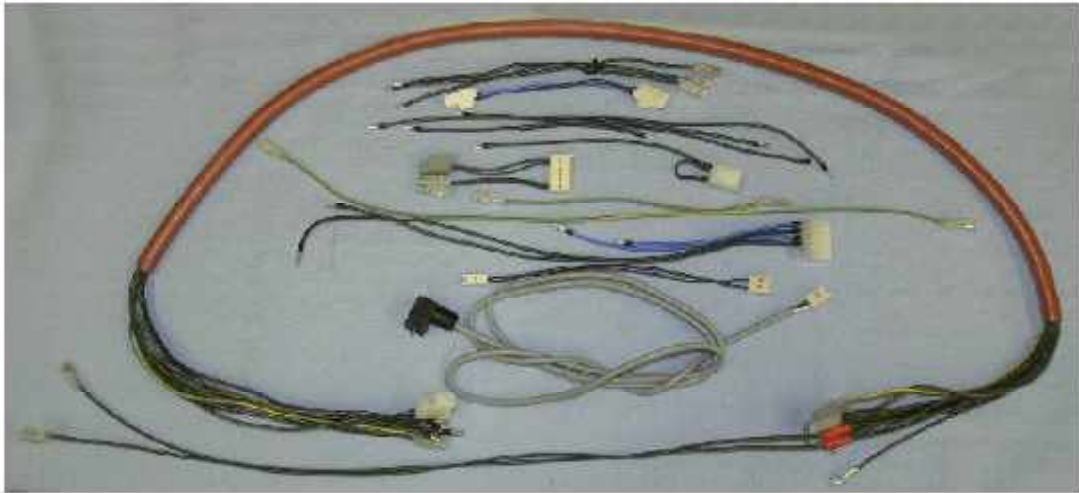
Part: intermediate plate clamp

Part-Number: 404814



Part: cable set Minimat classic

Part-Number: 9030-430-040



Part: slide Minimat

Part-Number: X1200-355-028

Service manual slider comfort assembled, Minimat 43 S 230V 50Hz

Version:

Ident:

Series:

Part-Number: X1200-355-027



Chapter

- 107082 - fastening element for cable clip 6mm
- 107159 - female multipoint connector 2 pole
- 107161 - female multipoint connector 3 pole
- 107657 - spacer for circuit boards
- 109042 - bearing rail l=225
- 109904 - end clamp grey
- 111231 - spacer
- 111338 - holder for wire harness
- 111339 - cable clip 102x2,5mm
- 111345 - cable with plug for axial fan
- 33884 - relay main switch
- 9030-330-001 - motherboard universal
- 9030-330-003 - terminal board active
- 9030-430-037 - data cable control Comfort-Class c
- 9030-430-041 - cable set Minimat comfort
- 9030-430-113 - USB-extension cord
- X1200-355-028 - slide Minimat

Part: fastening element for cable clip 6mm

Part-Number: 107082



Part: female multipoint connector 2 pole

Part-Number: 107159



Part: female multipoint connector 3 pole

Part-Number: 107161



Part: spacer for circuit boards

Part-Number: 107657



Part: bearing rail I=225

Part-Number: 109042



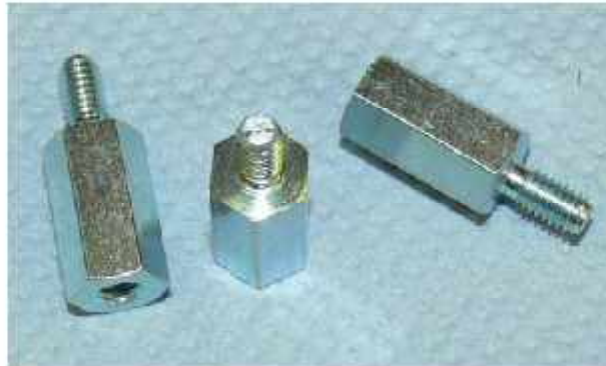
Part: end clamp grey

Part-Number: 109904



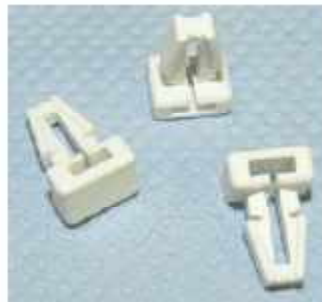
Part: spacer

Part-Number: 111231



Part: holder for wire harness

Part-Number: 111338



Part: cable clip 102x2,5mm

Part-Number: 111339



Part: cable with plug for axial fan

Part-Number: 111345



Part: relay main switch

Part-Number: 33884

The contactor switches the heater on/off.



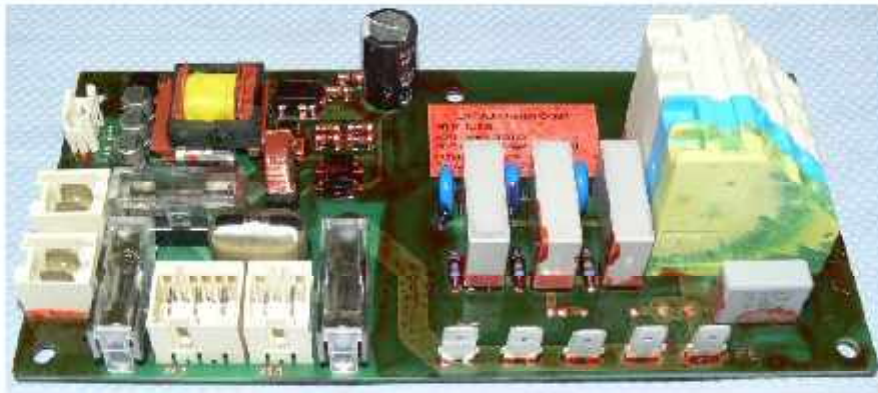
Part: motherboard universal

Part-Number: 9030-330-001



Part: terminal board active

Part-Number: 9030-330-003



Part: data cable control Comfort-Classic

Part-Number: 9030-430-037



Part: cable set Minimat comfort

Part-Number: 9030-430-041



Part: USB-extension cord

Part-Number: 9030-430-113



Part: slide Minimat

Part-Number: X1200-355-028

Servicemanual door, Minimat 43 S 230V 50Hz

Version:

Ident:

Series:

Part-Number:

Chapter

X1000-450-001 - door assembled, Minimat 43 S 230V 50Hz - V:

X1200-400-020 - door latch electrical, Minimat 43 S 230V 50Hz - V:

X1000-400-022 - door latch mechanical. Min mat 43 S 230V 50Hz - V:

Servicemanual door assembled, Minimat 43 S 230V 50Hz

Version:

Ident:

Series:

Part-Number: X1000-450-001

Chapter

08504 - MINIMAT1 drain gutter
100171 - silicone underlay Minimat door
110074 - glass fiber cable siflex SIS/GL
110900 - hose heat shrinkable
111805 - seal disc
33042 - porcelain clamp 2-pole 10A
33427 - halogen lamp 12V 20W
33891 - halogen socket
36050 - DU bushing
37502 - rubber foot silicone
39092 - blind plug, door MINIMAT
9000-199-003 - screw thread furrow
9040-110-001 - double ball catch
9040-150-001 - handle Minimat

Part: MINIMAT1 drain gutter

Part-Number: 08504

Condensation, which is reflected in the glass window of the Minimat will be collected in the gutter, and evaporated. Recommend to the customer during the manual cleaning the gutter clean with a damp cloth.



Part: silicone underlay Minimat door

Part-Number: 100171

Part: glass fiber cable siflex SIS/GL

Part-Number: 110074

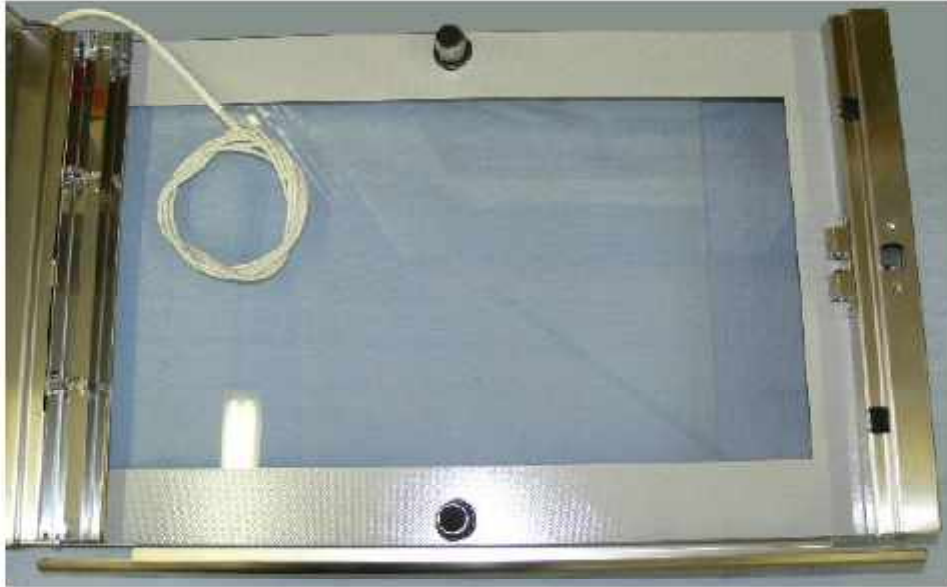


Part: hose heat shrinkable

Part-Number: 110900

Part: seal disc

Part-Number: 111805



Part: porcelain clamp 2-pole 10A

Part-Number: 33042

Check the porcelain lamp holders and cables for damage. Please do not squeeze or kink the cable.



Part: halogen lamp 12V 20W

Part-Number: 33427



Part: halogen socket

Part-Number: 33891

Check the porcelain lamp holders and cables for damage. Please do not squeeze or kink the cable.



Part: DU bushing

Part-Number: 36050



Part: rubber foot silicone

Part-Number: 37502

The separator between the sealing pane and the viewing pane ensures that it will not bend. This ensures that even in extreme conditions for example when steaming that the Minimat door remains sealed.



Part: blind plug, door MINIMAT

Part-Number: 39092



Part: screw thread furrow

Part-Number: 9000-199-003

Part: double ball catch

Part-Number: 9040-110-001



Part: handle Minimat

Part-Number: 9040-150-001



Servicemanual

door latch electrical, Minimat 43 S 230V 50Hz

Version:

Ident:

Series:

Part-Number: X1200-400-020

Chapter

00000797 - holding plate
106006 - block holder left
107634 - closing sheet left
107635 - closing sheet right
107650 - emergency opening door Minimat
110855 - silicone hose
36195 - electrical magnetic closure (IS)
36198 - door latch, electrical
9030-330-004 - additional board hoppo Minimat

Part: holding plate

Part-Number: 00000797



Part: block holder left

Part-Number: 106006



Part: closing sheet left

Part-Number: 107634



Part: closing sheet right

Part-Number: 107635



Part: emergency opening door Minimat

Part-Number: 107650



Part: silicone hose

Part-Number: 110855



Part: electrical magnetic closure (IS)

Part-Number: 36195



Part: door latch, electrical

Part-Number: 36198

The door block is fastened with 2 hexagonal screws M5 (wrench size 8) By loosening the screws the door blocks can be optimally adjusted. Tighten the screws once set. Secure the screws with Loctite 243 Article Number 61905.



Part: additional board hoppo Minimat

Part-Number: 9030-330-004



Servicemanual

door latch mechanical, Minimat 43 S 230V 50Hz

Version:

Ident:

Series:

Part-Number: X1000-400-022

Chapter

00000797 - holding plate

106006 - block holder left

107571 - spacers

400141 - contact switch door (MAN)

400542 - door latch, mechanical

400600 - mechanical closing sheet, MINIMAT left

400973 - mechanical closing sheet, MINIMAT right

401635 - latch MIN1

Part: holding plate

Part-Number: 00000797



Part: block holder left

Part-Number: 106006



Part: spacers

Part-Number: 107571



Part: contact switch door (MAN)

Part-Number: 400141



Part: door latch, mechanical

Part-Number: 400542

The door block is fastened with 2 hexagonal screws M5 (wrench size 8) By loosening the screws the door blocks can be optimally adjusted. Tighten the screws once set. Secure the screws with Loctite 243 Article Number 61905.



Part: mechanical closing sheet, MINIMAT left

Part-Number: 400600



Part: mechanical closing sheet, MINIMAT right

Part-Number: 400973



Part: latch MIN1

Part-Number: 401635



Service manual frame, Minimat 43 S 230V 50Hz

Version:

Ident:

Series:

Part-Number:

Chapter

X1000-100-000 - frame assembled, Minimat 43 S 230V 50Hz - V:

Service manual frame assembled, Minimat 43 S 230V 50Hz

Version:

Ident:

Series:

Part-Number: X1000-100-000

Chapter

106454 - earth sign Ø 12,5
109030 - stiffening plate Minimat 1/2
111338 - holder for wire harness
111474 - foot welded
111478 - rear panel
33040 - strain relief
33973 - axial fan cover
36219 - cover cap, plug
36833 - foot cover cap
40003 - silicone seal door
401606 - axial blower

Part: earth sign Ø 12,5

Part-Number: 106454



Part: stiffening plate Minimat 1/2

Part-Number: 109030

Part: holder for wire harness

Part-Number: 111338



Part: foot welded

Part-Number: 111474



Part: rear panel

Part-Number: 111478



Part: strain relief

Part-Number: 33040



Part: axial fan cover

Part-Number: 33973

To avoid injury the axial fan cover must be installed correctly.



Part: cover cap, plug

Part-Number: 36219

Plug for holes in the side wall.

Part: foot cover cap

Part-Number: 36833



Part: silicone seal door

Part-Number: 40003



Part: axial blower

Part-Number: 401606



Servicemanual installation room, Minimat 43 S 230V 50Hz

Version:

Ident:

Series:

Part-Number:

Chapter

X1200-200-021 - fixed water connection comfort control, Minimat 43 S 230V 50Hz - V:
111844 - fixed water connection manual control, Minimat 43 S 230V 50Hz - V:
X1000-300-005 - heater recirculating, Minimat 43 S 230V 50Hz - V:
X1200-200-011 - tank connection, Minimat 43 S 230V 50Hz - V:

Servicemanual

fixed water connection comfort control, Minimat 43 S 230V 50Hz

Version:

Ident:

Series:

Part-Number: X1200-200-021

Chapter

107920 - straight male 10/8

33377 - double nipple Ms

403753 - solenoid valve

40485 - teflon hose

9060-115-001 - extension -inside

9060-510-001 - flow meter

Part: straight male 10/8

Part-Number: 107920



Part: double nipple Ms

Part-Number: 33377



Part: solenoid valve

Part-Number: 403753

It is necessary to clean the dirt sieve of the solenoid valve regularly. Particles in the water line will stick to the sieve and interrupt the water flow. Please note the maximum water pressure and other warnings from the data sheets regarding the water connection. The solenoid valve works with a flow pressure of 150 - 600 kPa. You can test the solenoid valve function in the PC - Tool - Test. Attention the rest is a continued test and this function is not protected from overload.



Part: teflon hose

Part-Number: 40485



Part: extansion -inside

Part-Number: 9060-115-001



Part: flow meter

Part-Number: 9060-510-001



Servicemanual

fixed water connection manual control, Minimat 43 S 230V 50Hz

Version:

Ident:

Series:

Part-Number: 111844

Chapter

109002 - bolting angle 10/8

25306 - connection cable safety plug 230V

403753 - solenoid valve

40485 - teflon hose

45559 - pair of tray runners MIN1

Part: bolting angle 10/8

Part-Number: 109002



Part: connection cable safety plug 230V

Part-Number: 25306



Part: solenoid valve

Part-Number: 403753

It is necessary to clean the dirt sieve of the solenoid valve regularly. Particles in the water line will stick to the sieve and interrupt the water flow. Please note the maximum water pressure and other warnings from the data sheets regarding the water connection. The solenoid valve works with a flow pressure of 150 - 600 kPa. You can test the solenoid valve function in the PC - Tool - Test. Attention the test is a continued test and this function is not protected from overload.



Part: teflon hose

Part-Number: 40485



Part: pair of tray runners MIN1

Part-Number: 45559



Service manual heater recirculating, Minimat 43 S 230V 50Hz

Version:

Ident:

Series:

Part-Number: X1000-300-005



Chapter

- 107163 - female connector 5-pole
- 109859 - multi pin connector 5-pole
- 110352 - ventilation cover dotted
- 34485 - seal holder motor shaft
- 36314 - fan wheel
- 36321 - seal motor shaft, graphit
- 38134 - heater 3000 W
- 9020-110-004 - fan motor Min43 with 2 rotation speeds

Part: female connector 5-pole

Part-Number: 107163



Part: multi pin connector 5-pole

Part-Number: 109859



Part: ventilation cover dotted

Part-Number: 110352



Part: seal holder motor shaft

Part-Number: 34485



Part: fan wheel

Part-Number: 36314

The manufacturer tested the fan wheel for imbalance. Keep away any direct heat from the fan wheel for e.g., Blow lamps, otherwise the wheel will not run smoothly. An imbalance of the wheel will damage the motor and yield unsatisfactory baking results. The fan wheel is attached to the motor shaft and a fan wheel removal device must be used when replacing it. At any sign of imbalance the fan wheel must be replaced to prevent further damage.



Part: seal motor shaft, graphit

Part-Number: 36321

The motor shaft seal is a steam lead and seal against moisture at the back of the oven which could lead to disturbances. Therefore the following must be observed: Tighten the sealing plate after the motor is fastened, change seal after every removal of the motor.



Part: heater 3000 W

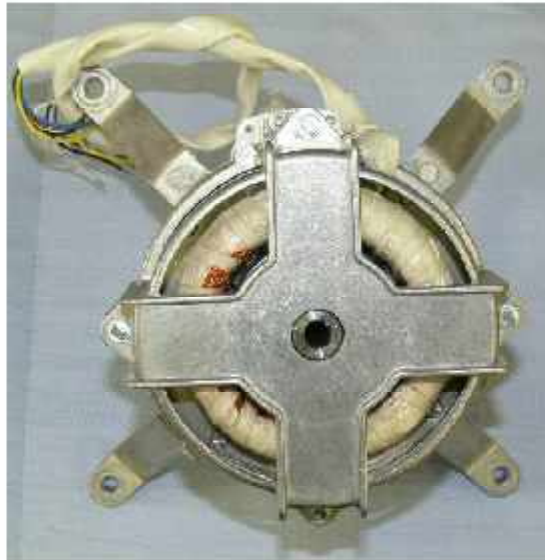
Part-Number: 38134

The ring heater is attached by the securing loops on the welded bolts on the oven wall with the nuts. The heater flange is secured with hexagonal screws. The ring heater can be replaced. When replacing the ring heater the seal must be also be replaced. Work with thread free hexagonal screws to prevent damage that may be caused by heat.



Part: fan motor Min43 with 2 rotation speeds

Part-Number: 9020-110-004



Service manual tank connection, Minimat 43 S 230V 50Hz

Version:

Ident:

Series:

Part-Number: X1200-200-011

Chapter

100495 -
100496 - tank
100515 - plug nipple tank
100529 - float switch
106224 - pump holder Minimat manual
107921 - fitting angle 10/8
111490 - holding plate Minimat
33355 - Bushing
33377 - double nipple Ms
34555 - silicone hose
37882 - level sensor connection
38513 - water tank pump
40485 - teflon hose
42237 - hose clamp 12-22/13A2
9010-810-003 - magnetic lock
9060-115-001 - extension -inside
9060-510-001 - flow meter
E 100502 - quick connect tank
X1200-355-054 - stiffening plate

Part:

Part-Number: 100495



Part: tank

Part-Number: 100496



Part: plug nipple tank

Part-Number: 100515



Part: float switch

Part-Number: 100529

The level sensor controls the filling level of the tank. A signal is given when the remaining contents are at 10%.



Part: pump holder Minimat manual

Part-Number: 106224

Part: fitting angle 10/8

Part-Number: 107921



Part: holding plate Minimat

Part-Number: 111490

Part: Bushing

Part-Number: 33355



Part: double nipple Ms

Part-Number: 33377



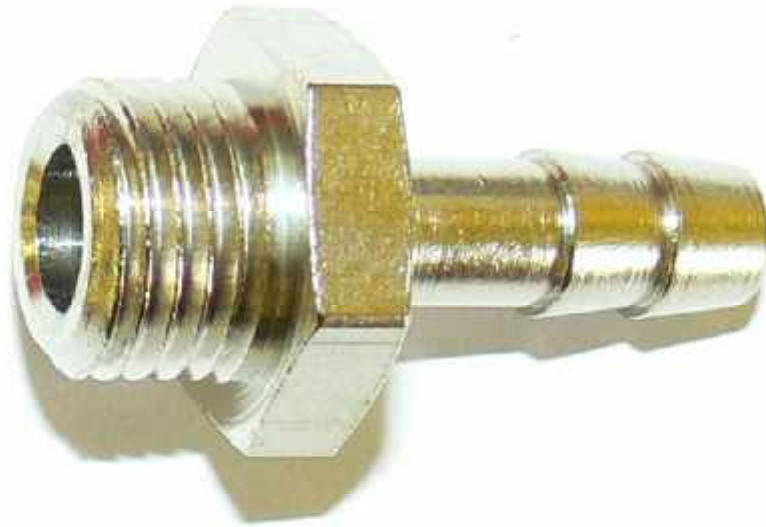
Part: silicone hose

Part-Number: 34555



Part: level sensor connection

Part-Number: 37882



Part: water tank pump

Part-Number: 38513

In mobile appliances with a tank the pump for the steamer is 230 V controlled. It puts the required amount of spray pressure in the oven.



Part: teflon hose

Part-Number: 40485



Part: hose clamp 12-22/13A2

Part-Number: 42237



Part: magnetic lock

Part-Number: 9010-810-003



Part: extansion -inside

Part-Number: 9060-115-001



Part: flow meter

Part-Number: 9060-510-001



Part: quick connect tank

Part-Number: E 100502

In order to avoid a snap in into the quick connector the metal clips have been removed



Part: stiffening plate

Part-Number: X1200-355-054

Urheberrecht:

Das Urheberrecht an diesem Servicehandbuch verbleibt bei der WIESHEU GmbH. Dieses Servicehandbuch ist nur für autorisierte Servicepartner und dessen Personal bestimmt. Sie enthält Vorschriften und Hinweise, die weder vollständig noch teilweise vervielfältigt, verbreitet oder anderweitig mitgeteilt werden dürfen.

Alle Darstellungen, Zeichnungen, Bilder Texte und Angaben sind urheberrechtlich geschützt. Sie unterliegen den gewerblichen Schutzrechten.

Zu diesem Servicehandbuch:

Alle Abbildungen in diesem Dokument sollen die Verständlichkeit unterstützen. Die Abbildungen sind nicht maßstabsgerecht. Teilweise sind dem Originalprodukt ähnelnde Abbildungen dargestellt, die geringfügig abweichen können.

Achtung!

Vermeiden Sie Fehlfunktionen oder Beschädigungen durch falsche Ersatzteile. Wir empfehlen die ausschließliche Verwendung von WIESHEU-Original-Ersatzteilen.

Wiesheu GmbH
Daimlerstrasse 10
DE-71563 Affalterbach
Telefon: +49 (0)7144 / 3 03-0
Fax: +49 (0)7144 / 3 03-11
Service-Telefon: 0800-WIESHEU
E-Mail: info@wiesheu.de
www.wiesheu.de

Stand: 27.04.2011